

AUSTRALIAN

WEEKENDS AWAY with Neale Whitaker

HOUSE & GARDEN

Holiday dreaming

120+
pages of

all-Australian interiors



**WINNING
WINDOWS**
Elegant solutions
for every room

GET ORGANISED
Good-looking diaries
for important dates

01
9 1313006 000709
are media

EXTERIOR The extension, clad in battens painted Dulux Monument, is a harmonious match with the original bagged-brick home.
FORMAL DINING Custom dining table, Christopher Blank Furniture. Massproductions 'Crown' dining chairs, In Good Company. Owen pendant light, MCM House. White vessels by Kirsten Perry. Blue vessel by Jessy King. Vintage oil painting in living area from Winsome Collection Red Hill.

MODERN FAMILY



When his childhood home came on the market, the owner of this Melbourne property snapped it up – and jazzed it up – for his own young family.

STORY *Carli Phillips* | STYLING *Orr Design Build* | PHOTOGRAPHY *Jack Lovel*



reinterpreting them for a contemporary Australian setting with a fun colour palette and modern art.

With the addition of contemporary furniture and darker colours, warming the interiors up with oak flooring was a non-negotiable. "Sticking with humble materials and relatively understated fabrics was key to achieving a chic and comfortable home," says Rhiannon. Jane agrees: "This house isn't about bells and whistles, it's about liveability and functionality for its occupants. It's a family residence that can evolve as children become teenagers and accommodate visitors from overseas as needed. It's practical, fresh and completely timeless."

Jane Cameron Architects, Fitzroy, Victoria; jancameronarchitects.com. Orr Design Build, Mornington Peninsula, Victoria; @designorrbuild. James McBride & Associates Master Builders, Mornington Peninsula, Victoria; jamesmcbride.com.au.

PERGOLA *Top left* Porto extendable dining table and matching benches, Eco Outdoor. Blackbutt decking. **EXTERIOR** *Above* Sequence curved bench, Coco Flip. There is direct access to this outdoor area from the living room. The cladding is finished in Dulux Monument, the brick is Dulux Natural White. **REAR ACCESS** *Left* Bluestone stepping stones. An existing pool was filled in to make way for an expanse of lawn and low-maintenance garden.



THE SOURCE

Varying shades of green and blue deliver pleasing pops of colour that work with any architectural style.



Produced by Saffron Sylvester. Study for Pad reproduced courtesy of the artist and Charles Nodrum Gallery.

1 Thoronet bronze dish, \$880, Studio Henry Wilson. 2 MissoniHome 'Brest 481' cushion (50x50cm), \$585, Spence & Lyda. 3 Australian House & Garden concrete soap dispenser, \$29.95, Myer. 4 Study for Pad artwork by Tom Alberts, POA, Charles Nodrum Gallery. 5 Flutter Two swing-arm wall sconce, \$6315.90, Paul Matter. 6 Massproductions 'Crown' armchair, POA, District. 7 Yos08, White vase by Asterisque, \$190, The En Gold Gallery. 8 HC28 'Oasis' coffee table by Frank Chou, \$3050, Domo. 9 Nara bath towel, \$12.95, Freedom. 10 Odessa 'Arborio' wool rug (240x300cm), \$5400, Armadillo. *For Where to Buy, see page 188. H&G*



THIS IS THE LIFE

The luxury of having two dining spaces isn't lost on the homeowner. The tables are in close proximity, but serve different purposes – one for everyday, the other for larger gatherings – which suits this family's style of living. The blue table, adjacent to the kitchen, is relaxed and playful, while the heavy-based table lends a sense of occasion when hosting special dinners.

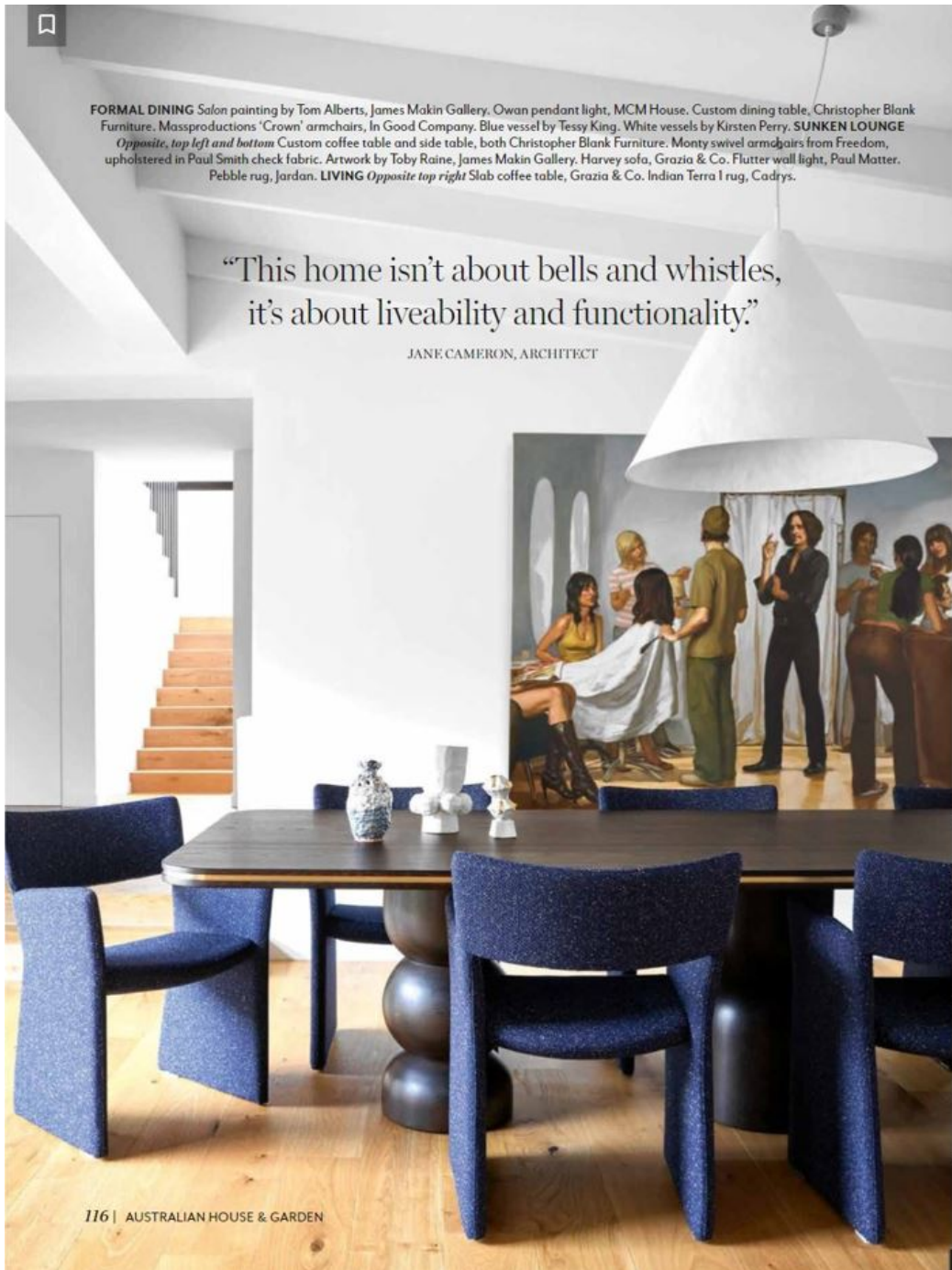


THE LAYOUT



MAIN BEDROOM Sunny bed, Jordan. Bedlinen, Cultiver. Nino II bedside table, Just Adele. Vintage oil painting, Winsome Collection Red Hill. Window furnishings in Interlaken fabric from Westbury Textiles. Feature wall painted Dulux Monument. **BATHROOM** Hydronic towel rail, Radiant Heating. Porcelain tiles in Light Grey Nat, Signorino. ▶

“Humble materials and understated fabrics were key to achieving a chic and comfortable home.” RHIANNON ORR, INTERIOR DESIGNER

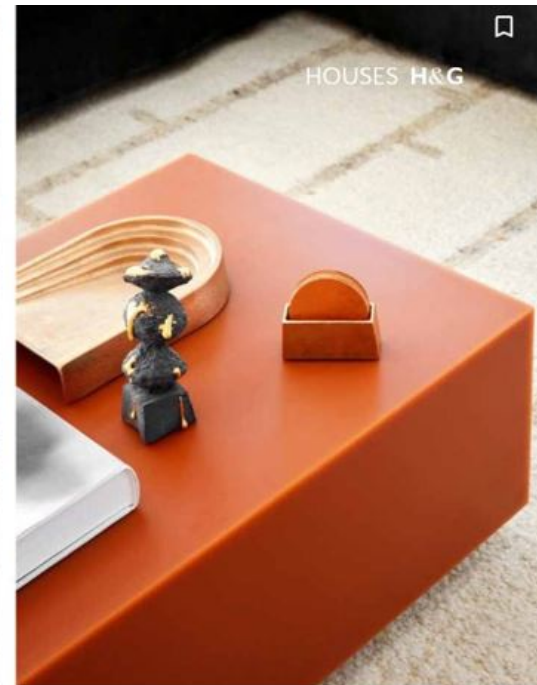


FORMAL DINING Salon painting by Tom Alberts, James Makin Gallery. Owan pendant light, MCM House. Custom dining table, Christopher Blank Furniture. Massproductions 'Crown' armchairs, In Good Company. Blue vessel by Tessa King. White vessels by Kirsten Perry. **SUNKEN LOUNGE** Opposite, top left and bottom Custom coffee table and side table, both Christopher Blank Furniture. Monty swivel armchairs from Freedom, upholstered in Paul Smith check fabric. Artwork by Toby Raine, James Makin Gallery. Harvey sofa, Grazia & Co. Flutter wall light, Paul Matter. Pebble rug, Jordan. **LIVING** Opposite top right Slab coffee table, Grazia & Co. Indian Terra I rug, Cadrys.

“This home isn’t about bells and whistles,
it’s about liveability and functionality.”

JANE CAMERON, ARCHITECT

Salon reproduced courtesy of the artist and Charles Nodrum Gallery.

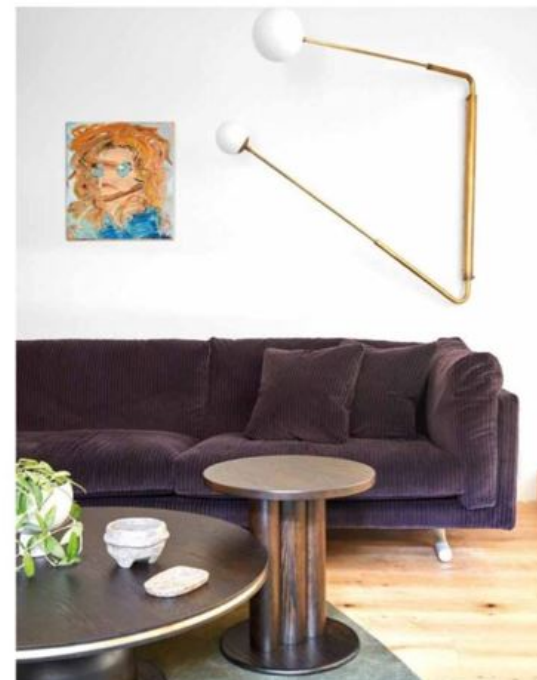


Buying this property was especially sentimental for the owner of this home in south-east Melbourne. Having lived in the house as a child, he knew the location and layout were ideal for family living, so was delighted to snap it up when it came on the market in 2008 and begin a new chapter in the property with his own children.

As special as the house was, a renovation was in order to make it absolutely perfect for its latest residents. Since the two-storey home backs onto a golf course, architect Jane Cameron decided to extend at the front, which required careful consideration of the streetscape so the new works didn't stick out like a sore thumb.

The floor plan consists of two wings at either end with a double-height communal zone right at the centre. This involved knocking out and shifting the front entrance, turning an old carport into a double-car garage, making room for a paved path to the side garden and adding a pergola to create a barbecue area.

Meeting the entryway is the main staircase, which leads to the first-floor addition and dedicated kids' zone with three bedrooms and hangout area on the landing. On the ground floor are two bedrooms and a bathroom to ▶





H&G HOUSES

THE PALETTE

Dulux Monument (exterior cladding, main bedroom feature)

Dulux Natural White (interior walls, exterior brickwork)

Dulux Maximus (kitchen joinery)

KITCHEN/DINING Joinery painted Dulux Maximus. Island and wall-side benchtop in Quantum Quartz Concrete Metro. Hula kitchen stools, Andreu World. Ego luce 'Saturno' ceiling lights, Custom Lighting. Cooktop and oven, Miele. Dining table by Christopher Blank Furniture. Tall vessel by Nature Bay North. Scape dining chairs, Grazia & Co. Vivid Slimline mixer, Phoenix Tapware. **STAIRWELL** Elegant timber flooring, Hurfords (throughout).

Paint colours are reproduced as accurately as printing processes allow.



the right, and a sunken lounge/library in what was formerly a bedroom. At the heart of the house is the light-drenched central living/dining space with raked ceilings and exposed beams. A central fireplace was removed to create a more generous, open feel.

The existing kitchen, at the rear of the house, was gutted and refitted with full-height joinery and a smart island topped in a concrete-toned quartz composite. The kitchen's footprint was also extended to accommodate a new pantry. Jane also made space for a new study, powder room and laundry on the opposite side of the stairs that lead to the main bedroom suite.

Blue tones weave a soothing and sophisticated thread through the home. In the casual dining area, for example, the custom-designed table - made by Mornington artisan furniture maker Christopher Blank - is painted a bespoke blue hue to contrast with the soft taupe upholstery of the Scape dining chairs from Grazia & Co. "The table is finished with a coloured stain rather than paint to allow the timber grain to show through," says interior designer Rhiannon Orr of Orr Design Build. "The colour shifts from deep indigo to electric blue depending on the angle of the light at different times of day. It took some time to find it, but it was important that the table be just the right shade so it didn't look too green or fight against the deep navy in the adjacent kitchen."

The owner had been living in the US during the renovation and for some years before and loved the large-scale furnishings often found in spacious American homes. With this in mind, Rhiannon took conceptual cues from traditional Georgian-style furniture and the tartan, plaid and corduroy fabrics so popular in the US, ▶

